



ANDARA

CAP CANA

Welcome to



Where exclusivity meets nature

An exclusive project of 175 apartments designed by the prestigious LUIS VIDAL + ARCHITECTS studio, located in one of the best master plans in Latin America.

Andara offers world-class amenities, green spaces with meticulous landscaping, and views of a golf course designed by Jack Nicklaus.



luis vidal + arquitectos

Our

LOCATION

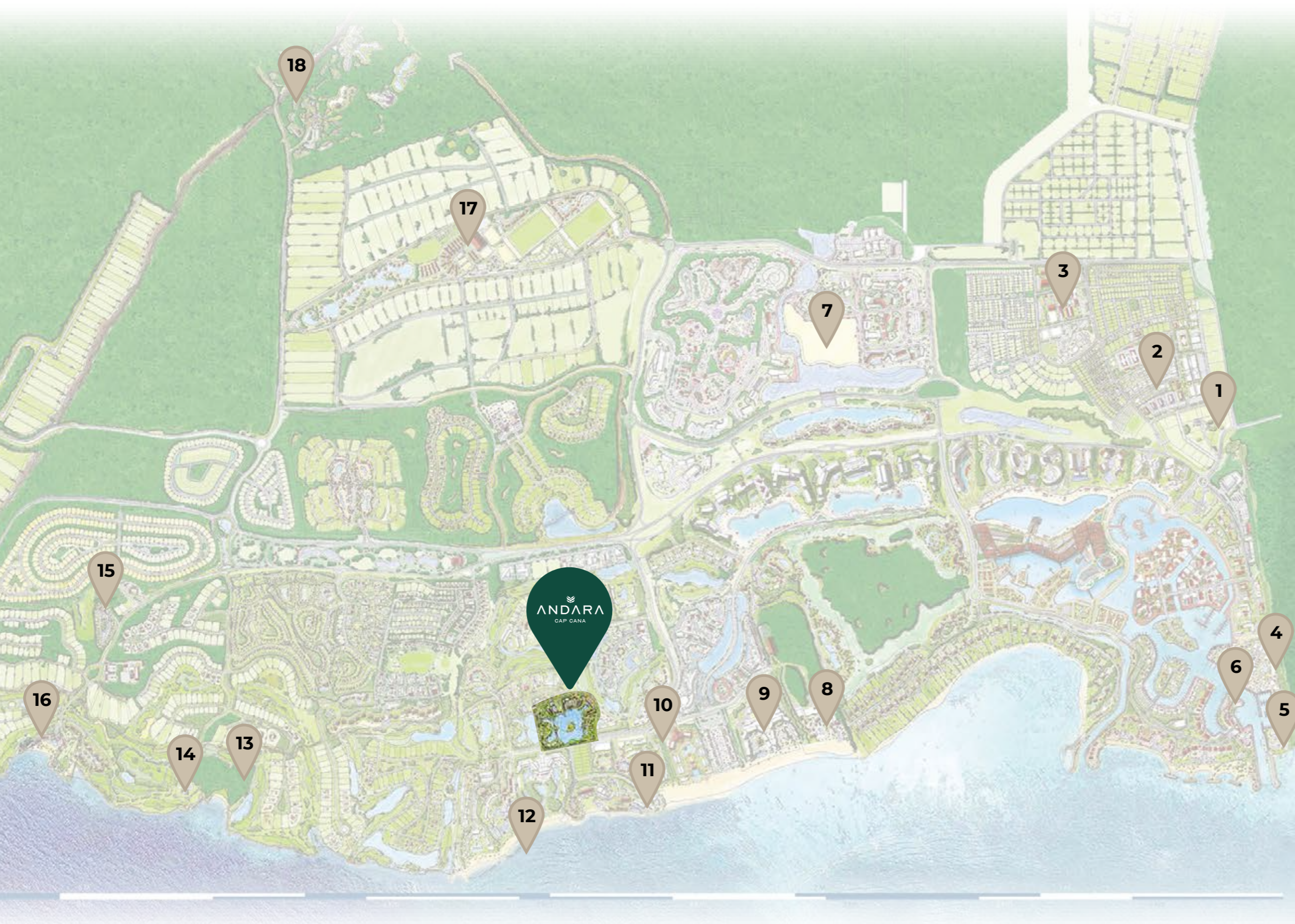
On a master plan covering 110 million square meters, Cap Cana is today the largest tourism and real estate development in the Dominican Republic, with a lifestyle philosophy based on service quality, foreign investment, and sustainability.

It stands out for its stunning turquoise beaches, the renowned Punta Espada golf course, a fully equipped equestrian center, Los Establos, and a world-class marina. Cap Cana offers a privileged environment for those seeking a secure real estate investment



Master plan

CAP CANA

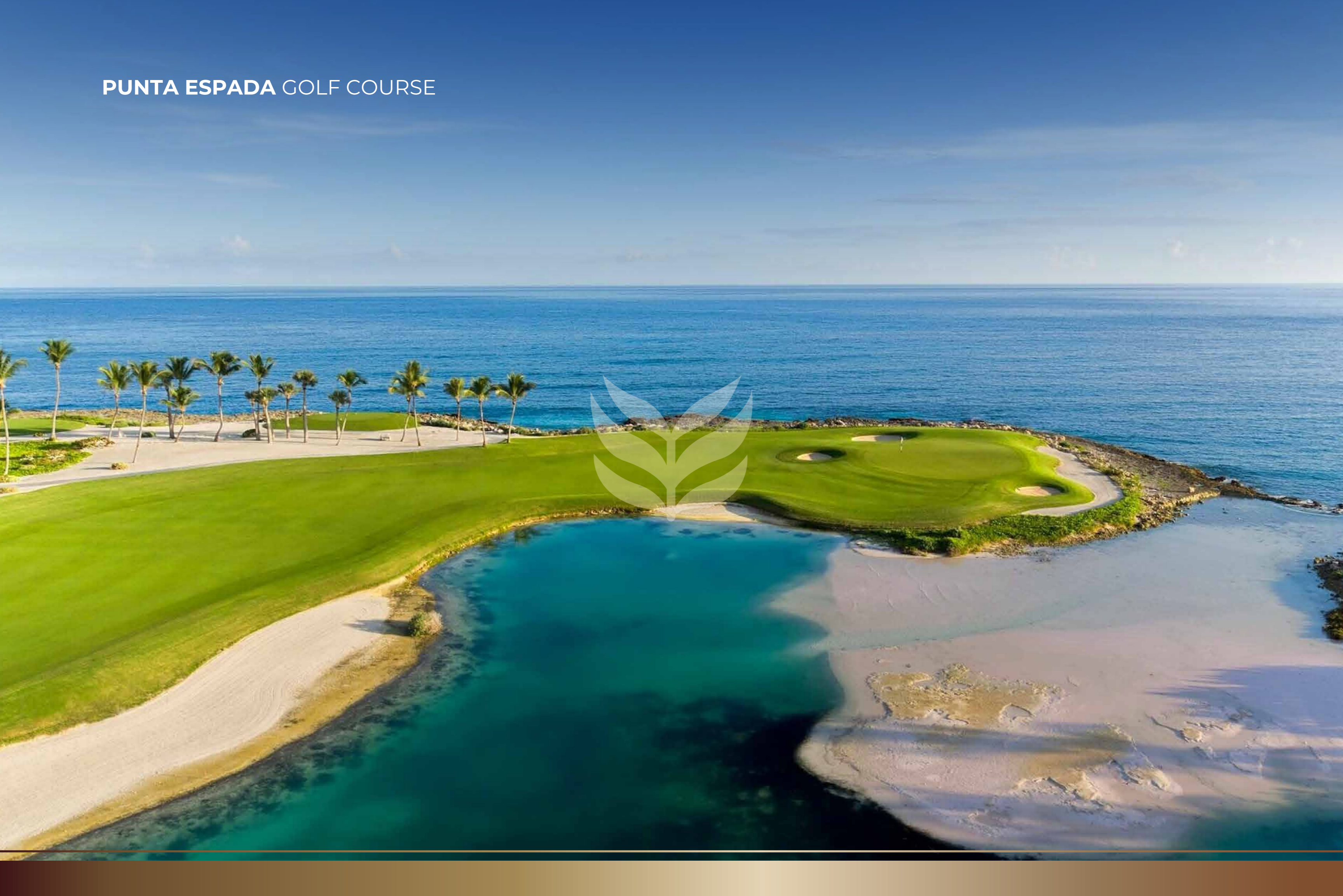


1. Information and Sales Center
2. Ciudad Las Canas
3. Heritage School
4. Sports Illustrated Resorts Marina and Villas
5. TRS Palladium Hotel
6. Marina Cap Cana
7. El Dorado Park
8. Secrets Cap Cana
9. Hyatt Ziva & Hyatt Zilara
10. Margaritaville Island Reserve
11. Sanctuary by Playa Resorts
12. Sotogrande at Cap Cana
13. St. Regis Resort
& Residences Cap Cana
14. Punta Espada Golf Course
15. Hotel Eden Roc Cap Cana
16. Eden Roc Cap Cana
Beach Club
17. Los establos
18. Scape Park

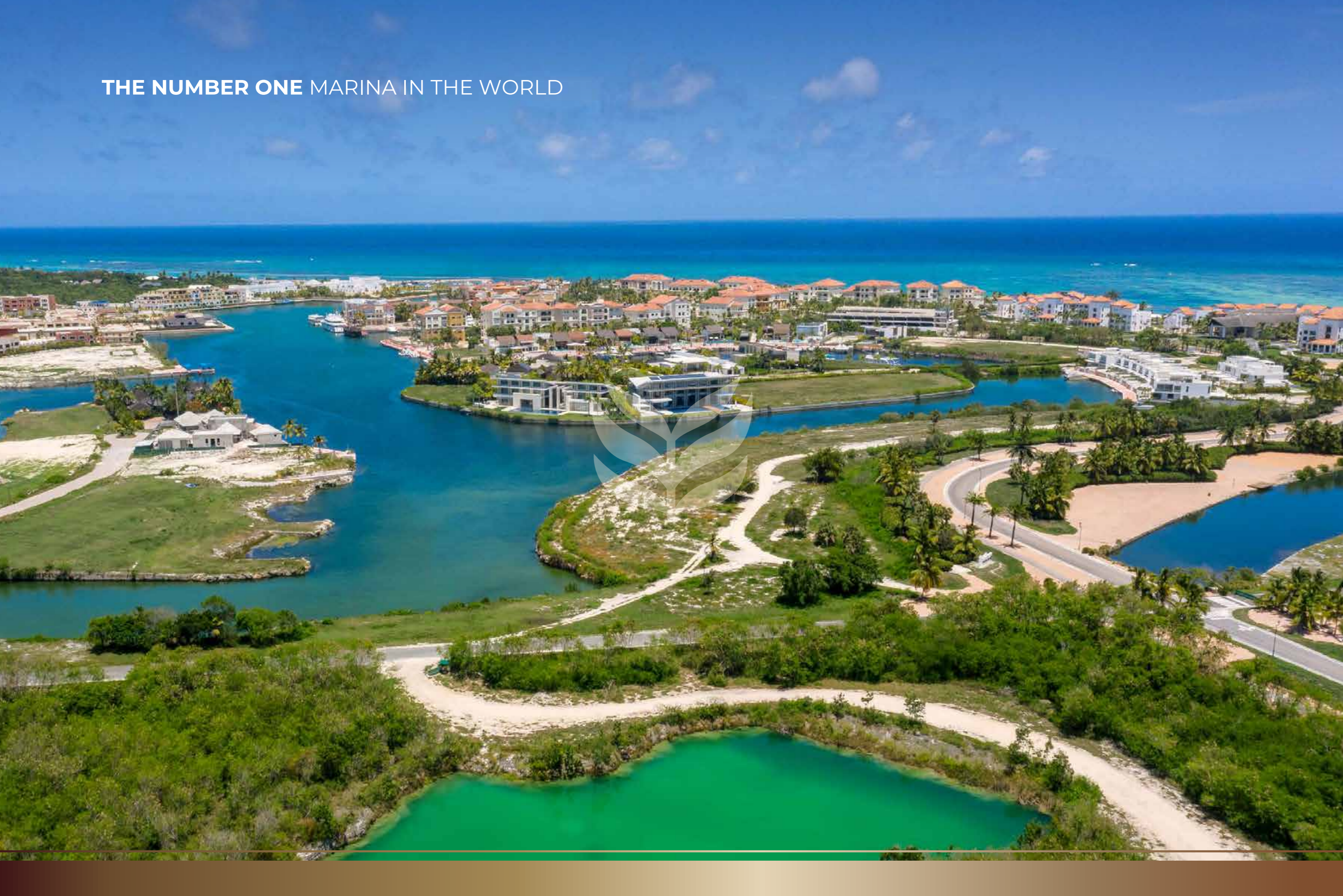
WHITE SAND BEACHES AND TURQUOISE WATERS



PUNTA ESPADA GOLF COURSE



THE NUMBER ONE MARINA IN THE WORLD





EQUESTRIAN CENTER

Things to do

CAP CANA



Caribbean Beaches



Golf Courses



Horseback riding



Shopping malls



Marina



Restaurants



Scape Park
(Adventure park)



El Dorado
(Water park)



Racquet village





A unique residential condominium facing the majestic Las Iguanas golf course, for those seeking much more than just a property.

Andara is a sanctuary inspired by the mysticism of the Caribbean, where every space reflects a deep connection with nature, in a place that redefines elegance and tranquility, and offers amenities typical of a luxury hotel.

Its strategic location, just 15 minutes from Punta Cana International Airport, makes Andara the ideal destination for those seeking a deep connection with nature and spiritual tranquility, away from the routines and stress of the big city.

At ANDARA, we have created an environment that evokes the serenity of a tropical paradise, offering the perfect harmony between sustainability and modern luxury.

OVERHEAD VIEW





ANDARA
CAP CANA

 **PLAYA JUANILLO**
Beach club

 **MARGARITAVILLE**

 **GOLF COURSE**
Las iguanas

VISION GENERAL



ANDARA

Early sale

PROPERTY SIZE STARTING AT **82 M²**
TO **262 M²**

APARTAMENTOS

1, 2 AND 3
BEDROOMS

PENTHOUSES

FAMILY ROOM
AND OPEN TERRACE
WITH PICUZZI

TOWNHOUSES

FRONT-LINE GOLF

*Dimensions, views, and layouts may vary



1H-A

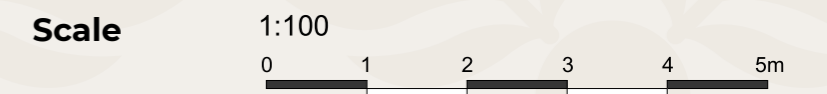
AREAS

Interior	65.31 m ²
Terrace	20.74 m ²
	86.05 m ²

LIVING SPACES DISTRIBUTION

Bathroom 1	6.60 m ²
Laundry room	0.90 m ²
Bedroom 1	16.35 m ²
Living room - kitchen	31.17 m ²

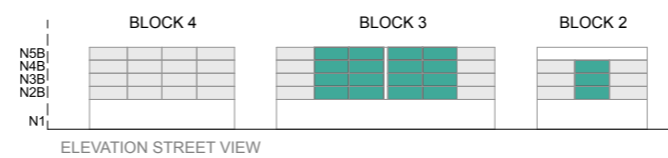
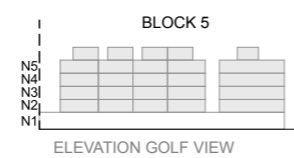
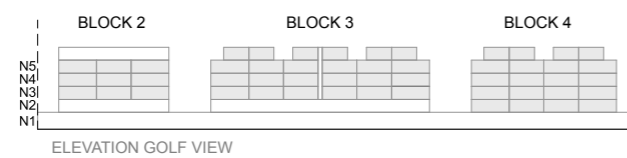
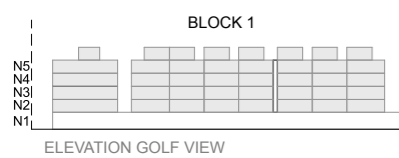
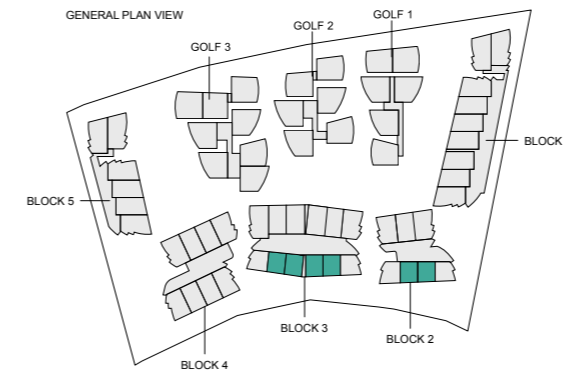
Note: The surface area of terraces and solariums varies in each property.



Property types 1H-A

Block

T-01



1H-B

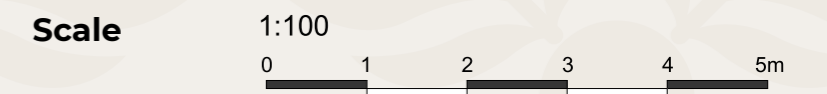
AREAS

Interior	66.96 m ²
Terrace	20.31 m ²
	87.27 m ²

LIVING SPACES DISTRIBUTION

Bathroom 1	3.90 m ²
Laundry room	0.90 m ²
Bedroom 1	18.09 m ²
Living room - kitchen	31.17 m ²

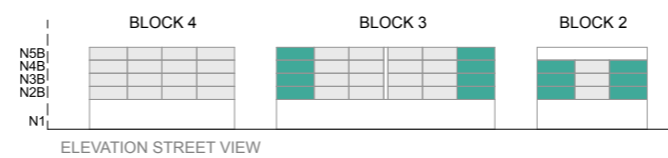
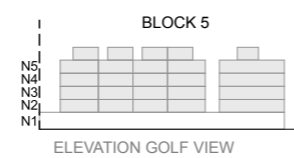
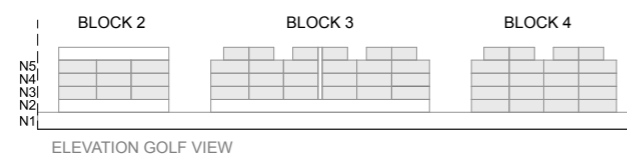
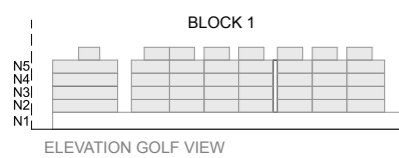
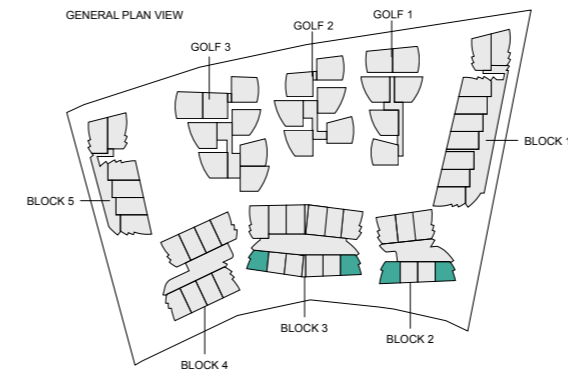
Note: The surface area of terraces and solariums varies in each property.



Property types 1H-B

Block

T-02



2H-A

AREAS

Interior	91.06 m ²
Terrace	22.28 m ²
	113.34 m ²

LIVING SPACES DISTRIBUTION

Bathroom 1	3.84 m ²
Bathroom 2	3.84 m ²
Laundry room	0.90 m ²
Hall	2.66 m ²
Bedroom 1	15.78 m ²
Bedroom 2	11.48 m ²
Living room - kitchen	38.92 m ²

Note: The surface area of terraces and solariums varies in each property.

Scale

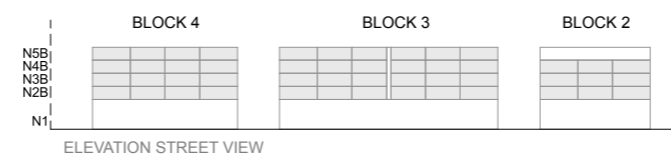
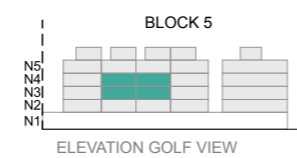
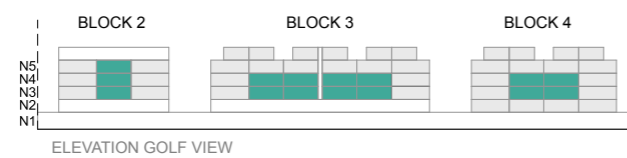
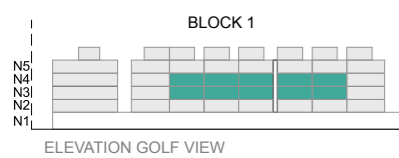
1:100



Property types 2H-A

Block

T-03



2H-B

AREAS

Interior	104.42 m ²
Terrace	27.38 m ²
	131.80 m ²

LIVING SPACES DISTRIBUTION

Half bathroom	3.30 m ²
Bathroom 1	5.83 m ²
Bathroom 2	3.36 m ²
Laundry room	0.95 m ²
Hall	5.75 m ²
Bedroom 1	16.79 m ²
Bedroom 2 - Lock off	18.74 m ²
Living room - kitchen	30.62 m ²

Note: The surface area of terraces and solariums varies in each property.

Scale

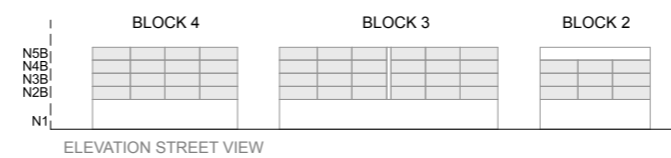
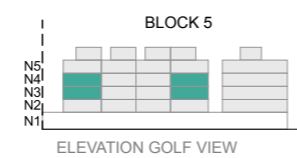
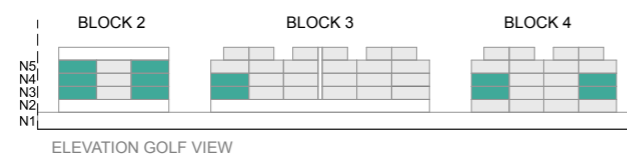
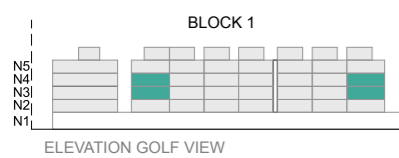
1:100

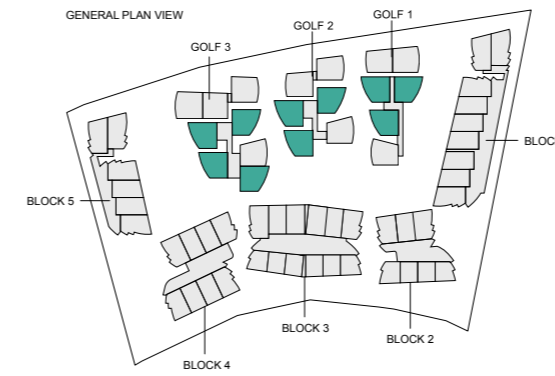


Property types 2H-B

Block

T-04





2H-Z1

AREAS

Interior	92.68 m ²
Solarium	42.52 m ²
Terrace	48.17 m ²
	183.37 m ²

LIVING SPACES DISTRIBUTION

Half bathroom	2.56 m ²
Bathroom 1	4.41 m ²
Bathroom 2	3.60 m ²
Bedroom 1	17.75 m ²
Bedroom 2	12.28 m ²
Living room - kitchen	32.35 m ²
Laundry room	2.21 m ²

Note: The surface area of terraces and solariums varies in each property.

Scale 1:100
0 1 2 3 4 5m

Property types 2H-Z1

Block

T-13

2H-Z3

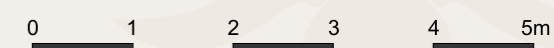
AREAS

Interior	94.31 m ²
Terrace	46.61 m ²
	140.92 m ²

LIVING SPACES DISTRIBUTION

Bathroomo 1	5.13 m ²
Bathroom 2	4.40 m ²
Laundry room	1.87 m ²
Bedroom 1	10.75 m ²
Bedroom 2	17.85 m ²
Living room - kitchen	39.50 m ²

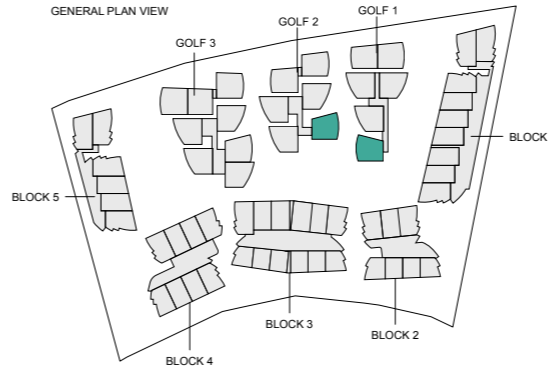
Note: The surface area of terraces and solariums varies in each property.

Scale 1:100


Property types 2H-Z3

Block

T-15



3H-A

AREAS

Interior	120.64 m ²
Terrace	19.64 m ²
	140.28 m ²

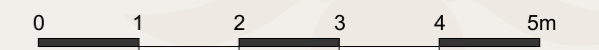
LIVING SPACES DISTRIBUTION

Bathroom 1	3.41 m ²
Bathroom 2	4.12 m ²
Bathroom 3	3.70 m ²
Laundry room	0.85 m ²
Hall	6.94 m ²
Bedroom 1	16.52 m ²
Bedroom 2 - Lock off	17.19 m ²
Bedroom 3	12.27 m ²
Living room - kitchen	34.55 m ²

Note: The surface area of terraces and solariums varies in each property.

Scale

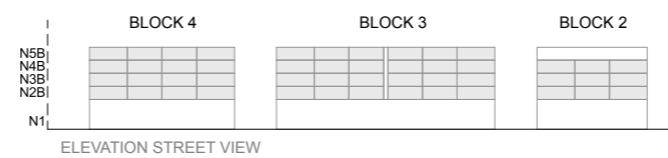
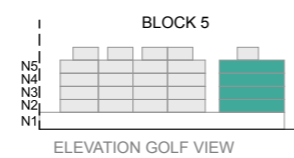
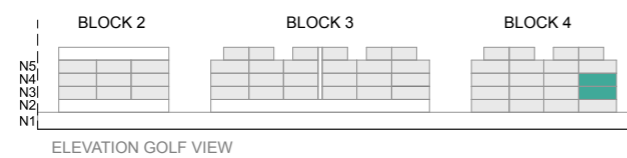
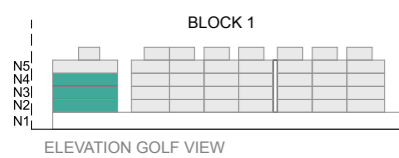
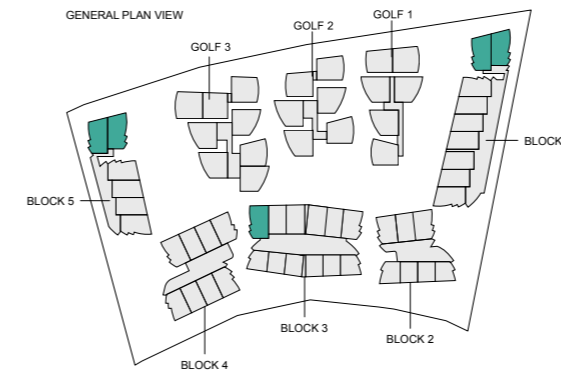
1:100



Property types 3H-A

Block

T-11









2H-G

AREAS

Interior	121.32 m ²
Solarium	70.70 m ²
Terrace	70.70 m ²
	140.28 m ²

LIVING SPACES DISTRIBUTION

Bathroom 1	3.84 m ²
Bathroom 2	3.84 m ²
Laundry room	0.90 m ²
Hall	2.66 m ²
Bedroom 1	15.78 m ²
Bedroom 2	11.48 m ²
Living room - kitchen	38.95 m ²
Storage closet	1.69 m ²
Half bathroom	3.00 m ²
Stairway	3.01 m ²
TV Room	18.31 m ²

Note: The surface area of terraces and solariums varies in each property.

Scale

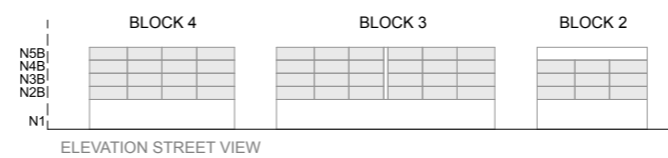
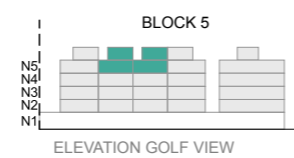
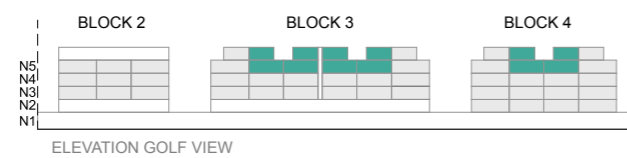
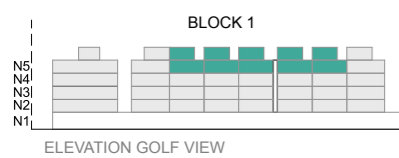
1:100



Property types 2H-G

Block

T-09



2H-H

AREAS

Interior	139.10 m ²
Solarium	85.65 m ²
Terrace	20.21 m ²
	244.97 m ²

LIVING SPACES DISTRIBUTION

Bathroom 1	3.30 m ²
Bathroom 2	5.83 m ²
Laundry room	0.95 m ²
Hall	5.81 m ²
Bedroom 1	16.79 m ²
Bedroom 2	18.93 m ²
Living room - kitchen	34.25 m ²
Storage closet	2.05 m ²
Half bathroom	2.73 m ²
Stairway	3.02 m ²
TV Room	16.24 m ²

Note: The surface area of terraces and solariums varies in each property.

Scale

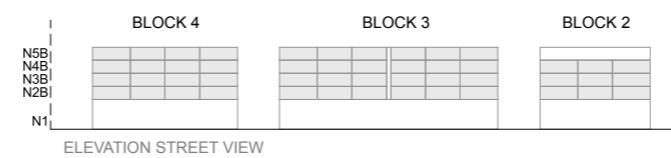
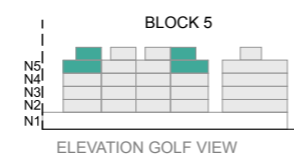
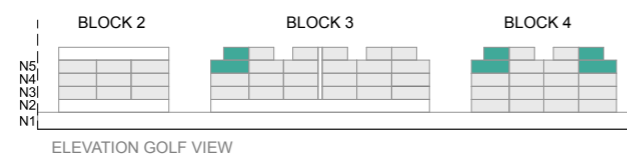
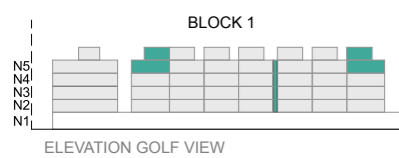
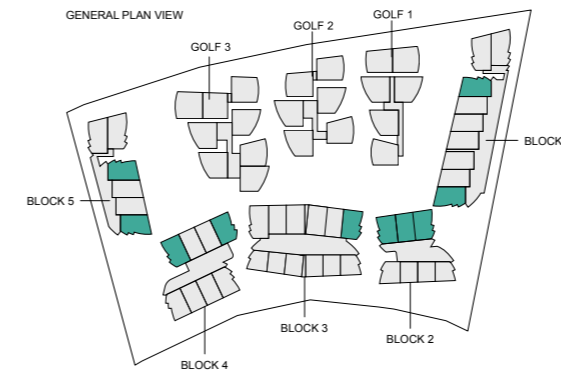
1:100



Property types 2H-H

Block

T-10



3H-B

AREAS

Interior	153.65 m ²
Solarium	98.52 m ²
Terrace	18.32 m ²
	270.49 m ²

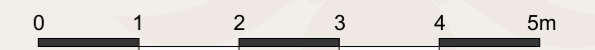
LIVING SPACES DISTRIBUTION

Bathroom 1	3.41 m ²
Bathroom 2	4.12 m ²
Bathroom 3	3.77 m ²
Laundry room	0.85 m ²
Hall	6.94 m ²
Bedroom 1	16.52 m ²
Bedroom 2 - Lock off	16.96 m ²
Bedroom 3	12.27 m ²
Living room - kitchen	37.46 m ²
Storage closet	1.69 m ²
Half bathroom	2.81 m ²
Stairway	3.02 m ²
TV Room	18.12 m ²

Note: The surface area of terraces and solariums varies in each property.

Scale

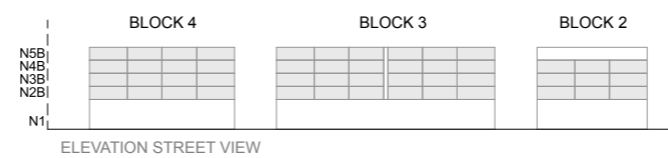
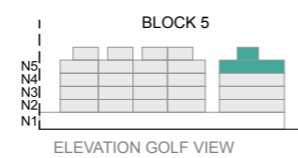
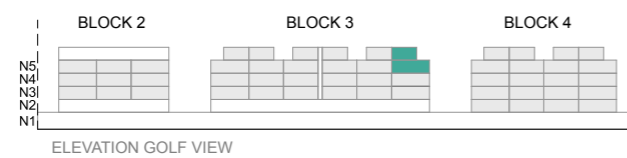
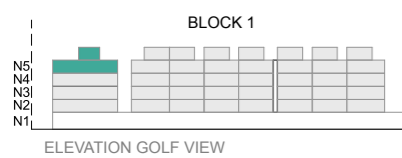
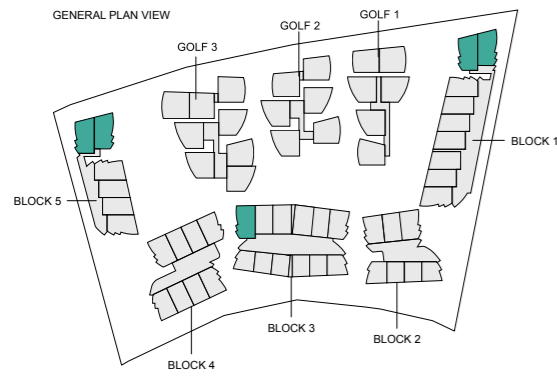
1:100



Property types 3H-B

Block

T-12







Amenities



6 WATERFALL
POOL



ADULT
ROOFTOP
INFINITY POOL



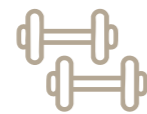
2 PICKLEBALL
COURTS
1 PÁDEL COURT



YOGA
STUDIO



COWORKING



GYM



EVENT
HALL



LOBBY FRONT DESK



PLAYGROUND



GOLF
SIMULATOR

The project features luxury hotel-style amenities spread across each of the 5 levels it consists of



PLAYGROUND



1 PADEL COURT



2 PICKLEBALL COURT







ANDARA
CAP CANA







Rediscover

THE TRUE MEANING OF HOME AT ANDARA.

ANDARA CAP CANA is not just a condominium, it's a destination.
A place designed for those seeking the extraordinary, the exclusive, and the natural.

We are



GET TO KNOW US, WE CREATE PLANNED COMMUNITIES
INTEGRATED WITH THE NATURAL ENVIRONMENT

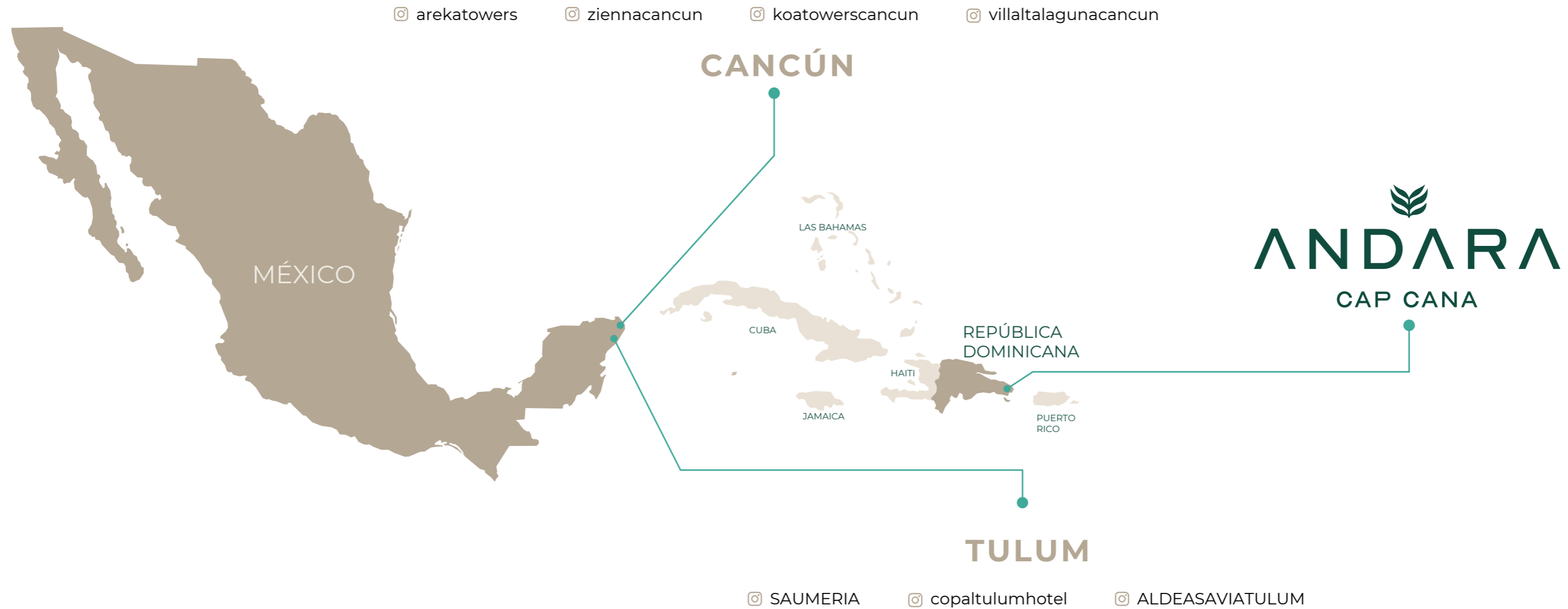
+750

HOMES DELIVERED
IN RECENT YEARS.

ONIX LIVING, LEADER IN THE CARIBBEAN

Onix Living is a real estate developer based in Cancún, Mexico, with extensive experience in the region and internationally (Spain, Mexico, Panama).

We specialize in the creation of innovative, high-quality projects, with successful developments in locations with high appreciation potential in the Caribbean



Our commitment to excellence and deep knowledge of the local market have positioned us as a trusted leader in the industry, offering living spaces that combine modern design with the natural beauty of the Caribbean coast.

VILLALTA
LAGUNA

ZIENNA
Cancún

Saumeria

KOA TOWERS

LA RESERVA
ALDEA SAVIA

ALDEA SAVIA
TULUM

AREKA TOWERS

C O P A L
TULUM

COPAL

56 properties (E)
8,000 m²



ALDEA SAVIA PHASE 1

171 properties (E)
16,000 m²



ALDEA SAVIA PHASE 2

170 properties (E)
16,000 m²



LA RESERVA

22 properties (E)
4,300 m²



TUANE

75 properties (E)
Residential



AREKA TOWERS

144 properties (E)
30,000 m²



KOA TOWERS

198 properties (C)
38,000 m²



ALDEA SAVIA PHASE 3

223 properties (C)
32,000 m²



ZIENNA

604 properties (PV)
250,000 m²



SAUMERIA

300 properties (PV)
48,000 m²



ANDARA

CAP CANA

 ONIXLIVING.MX